

**TUCSEN**

Quality management ISO 9001:2008

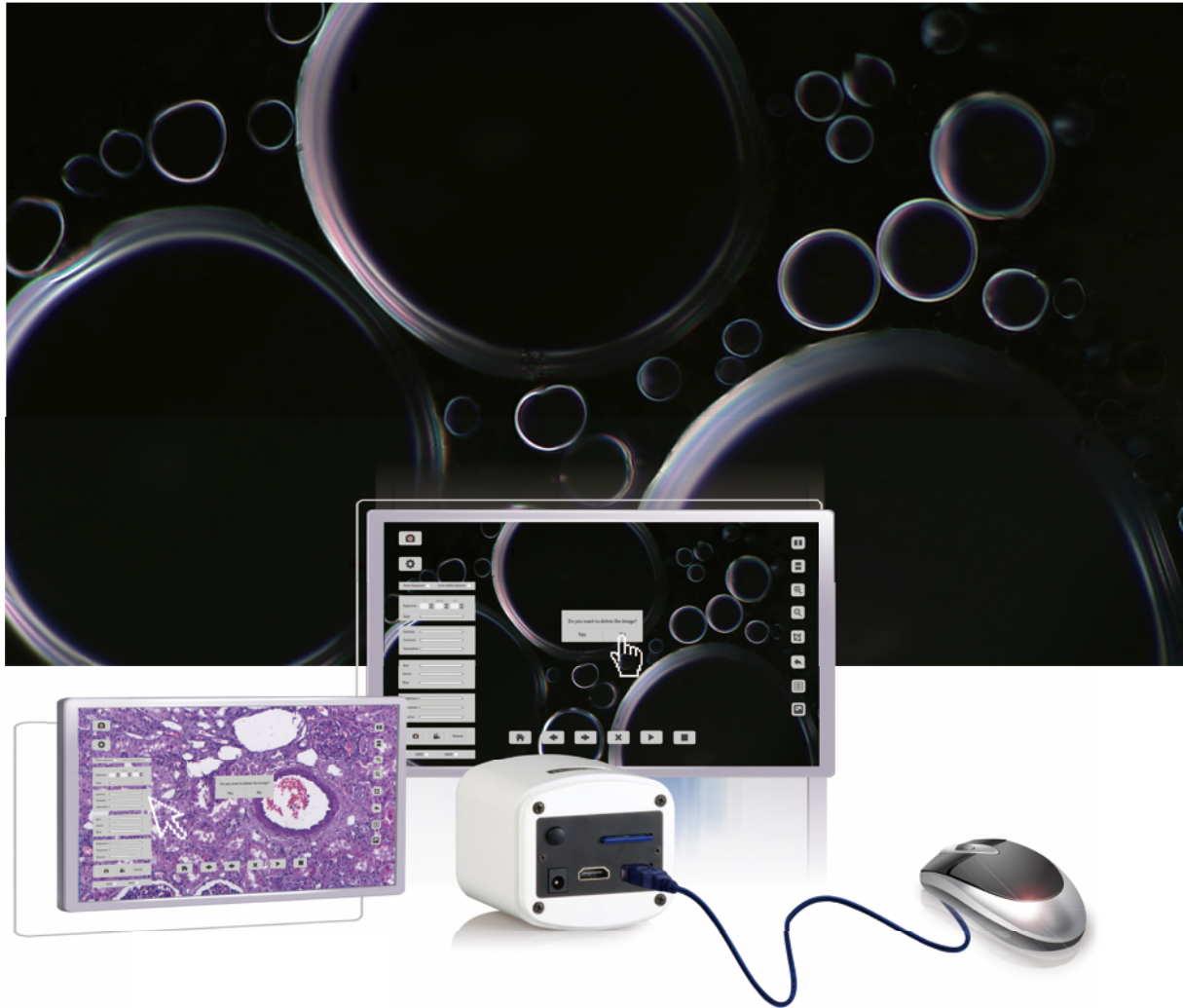
TrueChrome II

# Color Camera



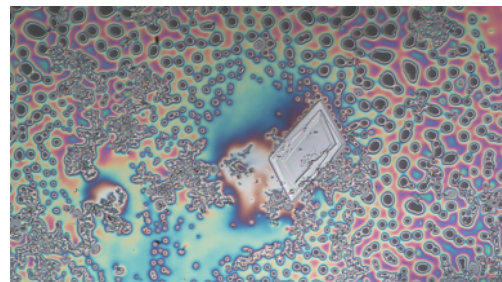
# Built-in Mouse Control Camera

The significant innovation of TrueChrome II is making the software implant inside the camera. The user can control the camera only by a mouse directly.



## Superb Smart Camera

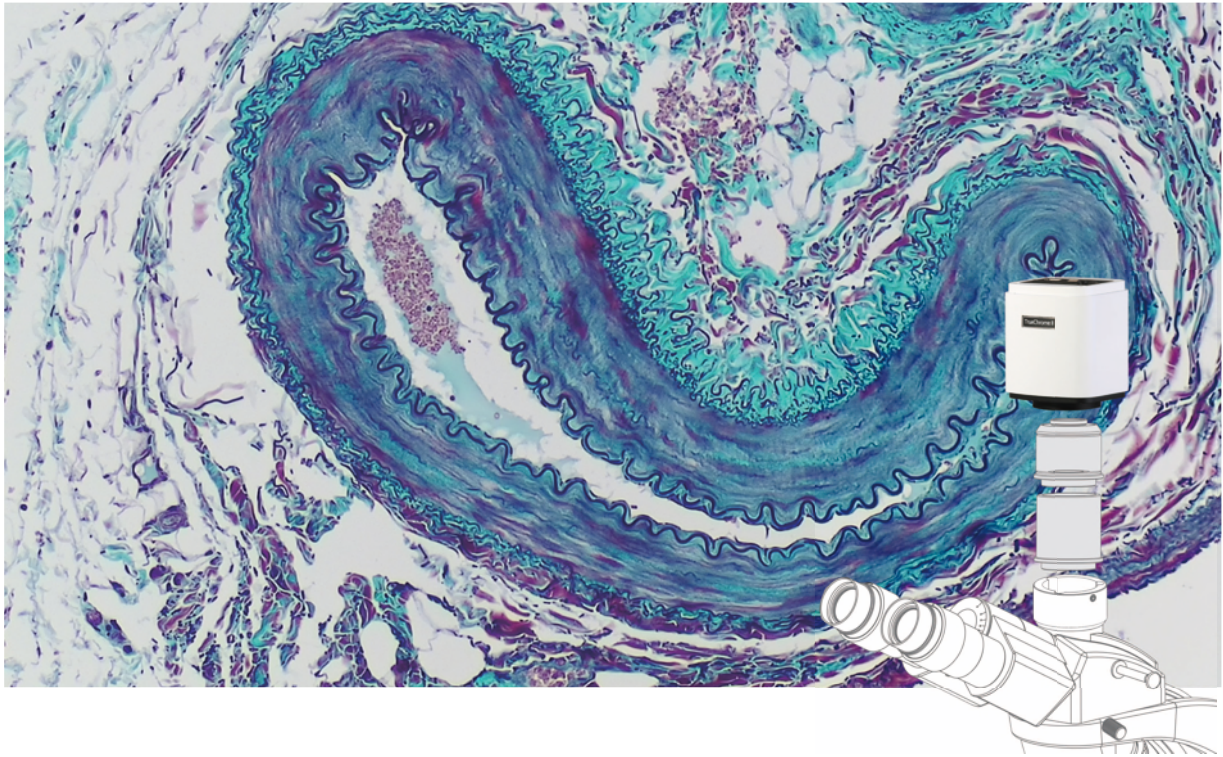
TrueChrome II automatically analyze the acquired images, optimize the white balance, exposure time and saturation to present the perfect images. Whatever for bright field bio imaging or dark field polaroid, crystal imaging, you can get ideal images, barely need any parameter adjustment.





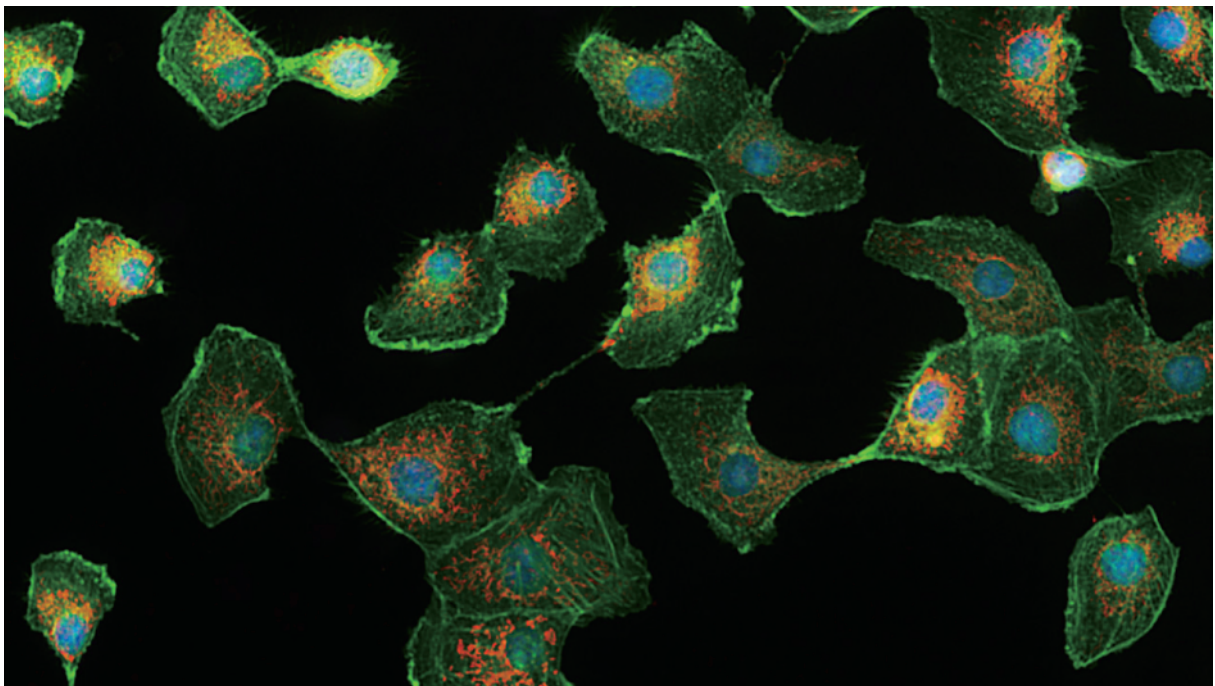
# 30 frames/second

With 30fps data transfer at resolution 1920X1080 without any compression, TrueChrome II creates a miracle. It is one of the fastest USB2.0 cameras in the world.



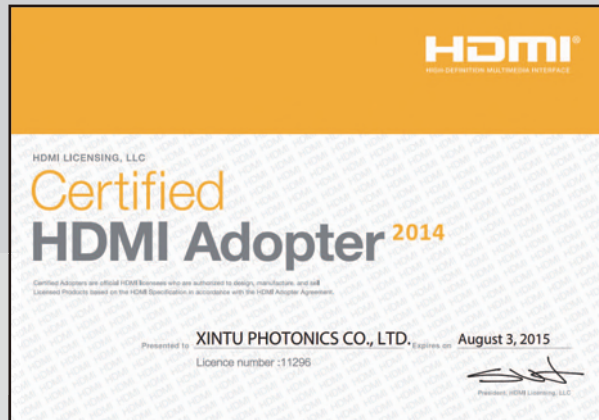
## HDMI FL imaging Capability

Taking advantage of the ultra high signal-to-noise ratio sensor, TrueChrome II allows you to set up to 10 seconds exposure time. The incredibly efficient 3D noise reduction performance delivers finest detailed images for low light fluorescence.



# Copyright >>

Tucsen is an authorized Adopter of the international organization HDMI associate. We are the legal supplier of HDMI scientific cameras which represents the best stability and compatibility of Tucsen HDMI scientific cameras.



## Technical Specifications:

### Features

Sensor	IMX236
Sensor size	1/2.7" (assemble with Exfocus05 Can achieve 80% field of view)
Live Resolution	1920x1080
Frame speed	1920x1080 30fps via USB2.0 1920x1080 60fps via HDMI
Image Record	High speed SD Card (8G)
Video Record	1080p 30fps in SD Card 1080p 30fps in PC
Exposure time	0.001 sec ~ 10.0 sec
White balance	Auto
Settings	Gain, Gamma, Saturation, Contrast
Built-in software	Cloud 1.0 ver
PC software	ISCapture
Output model 1	USB2.0
Output model 2	HDMI
System Compatible	xp, win7/8, 32/64bit, MAC OSX
Optical port	C-Mount

### Packing List

- TrueChrome II camera
- HDMI cable
- USB cable
- 12V power adaptor
- SD card
- Mouse
- ISCapture software
- packing box



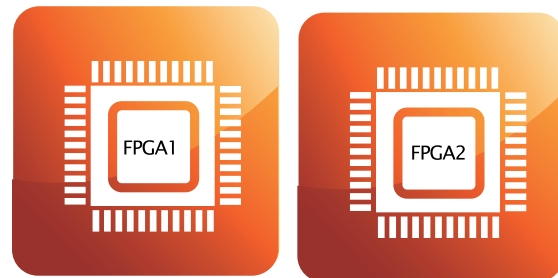


## HDMI+USB2.0+microSD output

Multiple output options are available for this powerful HDMI camera. HDMI 1080P, USB2.0, or SD memory card can be chosen as the individual output or three outputs are used **SIMULTANEOUSLY**.



## Dual FPGA Processors Inside



With innovative Dual FPGA processor architecture design, FPGA1 for truechrome image quality processing and FPGA2 for image output controlling, Truechrome HD camera ensures the high-speed preview but without sacrificing the image quality. It is the most powerful HDMI camera you deserve to have.

## Smart Presentation



Camera parameters as exposure time, white balance and gain are designed to automatic operation in default status. Automatic optimum configuration is expected to be done in 0.015 seconds, and you'll find the camera is easily managed even for the first time.

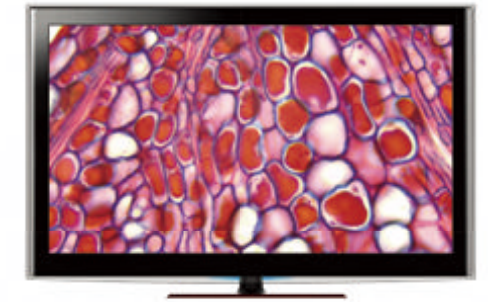
## Advanced Parameter Setting



For users with specified requirements, the camera is designed with parameter setting buttons that realize manual adjustment of white balance, gain, saturation, Gamma and screen freeze to present perfect images.

## PC to TV

Images are displayable on PCs and HDMI installed TVs. All parameters can be controlled by the computer to make them adjusted to actual situations. That is advantageous in teaching&meeting application.

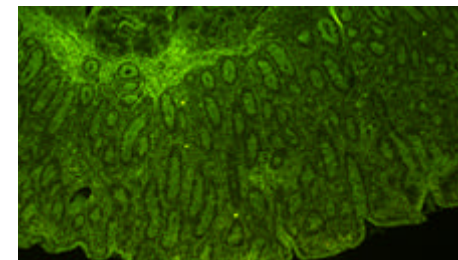


## On-board Video Saving



MicroSD card can not only save still image, but also is competent to save dynamic images in 720P color definition, that the motion trails are recorded in fast speed and intact form.

## Low Light Video Capability



Thanks to the high sensitivity sensor, TrueChrome HD Camera is capable of capturing low light images rapidly. In dark field imaging even in fluorescence, it will automatically increase the sensitivity, present the low light images with HDMI high speed preview mode.

## Technical Specifications:

- HDMI C-mount camera
- Frame speed 60 fps
- Live resolution 1920x1080
- Still resolution 3264x1836
- Video record: 720P 12.5fps
- Output HDMI, USB2.0, microSD
- Parameter button (1) Exposure, White balance, Gamma Gain, Sharpness, Saturation, Contrast
- Parameter button (2) Cross line, image comparison, Image freeze
- Operation system support: XP and later, Mac OS X
- Software: ISCapture full parameter control

